

LEGEND:

Roadway

Building Setbacks

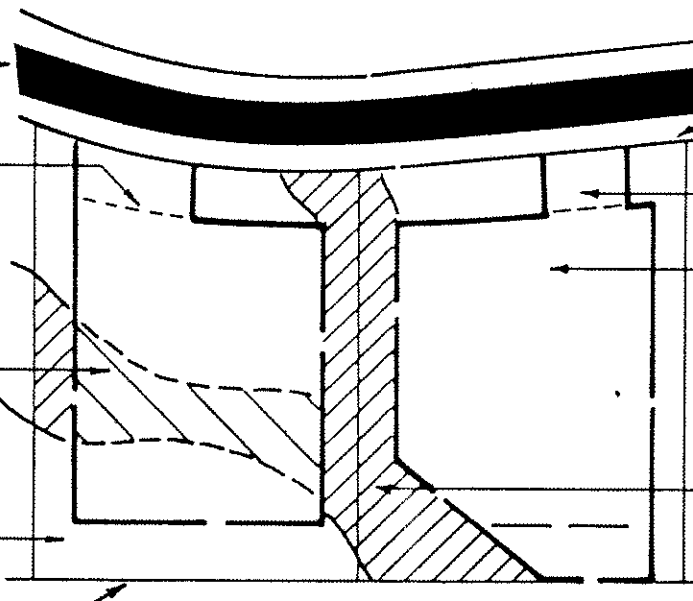
Setbacks for residential structures, accessory buildings, garages, carports, walls over 3' and other structures with walls over 3'.

Modification Areas

Portions of significant site features where modifications will be allowed with approval of the ARC.

Desert Landscape

Lot Line



R.O.W. Line

Access Area

Development Zone

Location of residence, accessory buildings, patios, terraces, pools, tennis courts, walls and other improvements.

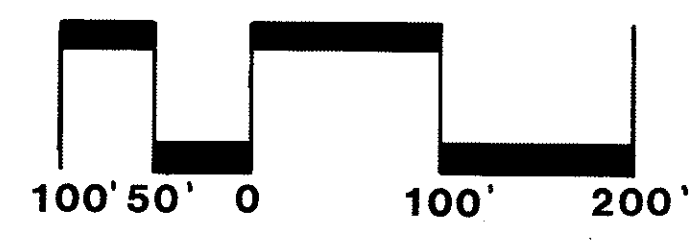
Significant Site Features

Major drainages and hillsides that are to be preserved to protect visual amenities, wildlife habitat and natural drainage.

ESTRELLA MOUNTAIN ESTATES

DEVELOPMENT ZONE MAP - PARCEL EIGHT

Date: February 1988



PREPARED BY: DESIGN WORKSHOP, INC.